

Commissioned by Music at Eden's Edge
for Orlando Cela
funded by the Brannen-Cooper Fund

Spell

for Flute and String Trio

Mark Berger
(2009)

♩ = 92

Flute

Violin

Viola

Violoncello

5

Fl.

Vln.

Vla.

Vc.

8

Fl.

Vln.

Vla.

Vc.

- Spell-

2

11

Fl. *f* *ppp* *mp*

Vln. *pp*

Vla. *mp* *pp*

Vc. *mf* *pp* *mf*

pizz. *arco* *pizz.* *arco*

Measures 11-13: Flute has a melodic line with triplets and dynamics *f*, *ppp*, and *mp*. Violin and Viola play a rhythmic accompaniment with dynamics *pp* and *pp*. Violoncello plays a bass line with dynamics *mf*, *pp*, and *mf*, alternating between *pizz.* and *arco*.

14

Fl. *mp* *mf* *f*

Vln. *mf* *mp*

Vla. *mp*

Vc. *ppp* *mf* *pp* *mp*

pizz. *arco* *pizz.* *arco*

Measures 14-16: Flute has a melodic line with dynamics *mp*, *mf*, and *f*. Violin and Viola play a rhythmic accompaniment with dynamics *mf* and *mp*. Violoncello plays a bass line with dynamics *ppp*, *mf*, *pp*, and *mp*, alternating between *pizz.* and *arco*.

17

Quasi recitative

Fl. *ff*

Vln. *f* *pizz.* *ff*

Vla. *f* *pizz.* *ff*

Vc. *f* *pizz.* *ff*

Measures 17-19: Flute has a melodic line with dynamics *ff*. Violin and Viola play a rhythmic accompaniment with dynamics *f* and *ff*, alternating between *pizz.* and *arco*. Violoncello plays a bass line with dynamics *f* and *ff*, alternating between *pizz.* and *arco*. The section is marked "Quasi recitative".

20

Fl. *p* *pp* *f* *p*

Vln. arco *p*

Vla. arco *f* *p*

Vc. arco *mp* *espress.*

24

rit.

Fl. *mf* *f* *ppp*

Vln. *mf* arco *pp* pizz.

Vla. *f* arco *ppp* *mf* arco *pp*

Vc. *f* arco *ppp*

29

$\text{♩} = 66$

Fl. *p*

Vln. *p*

Vla. *p*

Vc. *p*

- Spell -

4 35

Fl. *mf* *mp*

Vln. *pizz.* *mf* *f* *mp* *arco* *mp*

Vla. *pizz.* *mf* *f* *mp* *arco* *mp*

Vc. *pizz.* *mf* *f* *mp* *arco* *mp*

40 $\text{♩} = 82$

Fl. *fp* *accel.*

Vln. *pp*

Vla. *pp*

Vc. *pizz.* *mf*

45

Fl. *fp* *p* *mf*

Vln. *mf* *p* *p* *mf*

Vla. *mf* *p* *mf*

Vc. *p*

- Spell-

50

5

Fl. *p* *mp* *mf*

Vln. *p* *f* *mp* *f* *mf*

Vla. *f* *mp* *f* *mf* *f*

Vc. *p* *mp* *mf*

Measures 50-53. Flute: *p*, *mp*, *mf*. Violin: *p*, *f*, *mp*, *f*, *mf*. Viola: *f*, *mp*, *f*, *mf*, *f*. Violoncello: *p*, *mp*, *mf*. Includes dynamics, articulation (pizz., arco), and fingerings (3, 5).

54

rit. ♩ = 66

♩ = 92

Fl. *p* *f* *ppp*

Vln. *mp* *p* *f* *pp*

Vla. *mf* *mp* *f* *ppp*

Vc. *mp* *p* *f* *pp*

Measures 54-57. Flute: *p*, *f*, *ppp*. Violin: *mp*, *p*, *f*, *pp*. Viola: *mf*, *mp*, *f*, *ppp*. Violoncello: *mp*, *p*, *f*, *pp*. Includes dynamics, articulation (pizz., arco), and fingerings (3).

58

Fl. *f* *ppp* *mp*

Vln. *mf* *pp*

Vla. *f* *ppp* *f* *ppp* *f*

Vc. *f* *ppp* *f* *f*

Measures 58-61. Flute: *f*, *ppp*, *mp*. Violin: *mf*, *pp*. Viola: *f*, *ppp*, *f*, *ppp*, *f*. Violoncello: *f*, *ppp*, *f*, *f*. Includes dynamics, articulation (pizz., arco), and fingerings (3, 5).

- Spell-

6

62

Fl. *pp* *f* *ppp* *f* *ppp*

Vln. *mp* *f* *ppp* *f* *ppp* *pp*

Vla. *mp* *f* *ppp* *f* *ppp* *arco* *ppp*

Vc. *mp* *f* *ppp* *f* *ppp* *arco* *f*

Measures 62-65: Flute and Violin parts feature complex rhythmic patterns with triplets and slurs. Dynamics range from *pp* to *ppp* and *f*. Viola and Violoncello parts include *pizz.* and *arco* markings.

66

Fl. *ff* *f* *pp* *pp* *ff*

Vln. *ff* *p* *ff* *p* *ff*

Vla. *ff* *pp* *ff* *p* *ff* *p*

Vc. *pp* *pp* *ff* *f* *pp* *p*

Measures 66-69: Flute and Violin parts feature complex rhythmic patterns with triplets and slurs. Dynamics range from *pp* to *ff*. Viola and Violoncello parts include *pizz.* and *arco* markings.

70

Fl. *f* *pp* *mp* *ff* *f* *mf* *ff* *mf*

Vln. *p* *ff* *mp* *ff* *mf* *ff* *mf* *ff* *mf*

Vla. *ff* *mp* *ff* *mf* *ff* *mf* *ff* *mf*

Vc. *ff* *f* *mf* *ff* *mf* *ff*

Measures 70-73: Flute and Violin parts feature complex rhythmic patterns with triplets and slurs. Dynamics range from *p* to *ff*. Viola and Violoncello parts include *pizz.* and *arco* markings.

73

Fl. *ff*

Vln. *ff*

Vla. *ff f* *ff* *pizz.* *ff*

Vc. *f* *ff*

Measures 73-74. Flute, Violin, and Viola parts feature triplets and accents. Violoncello part includes a pizzicato section. Dynamics range from *f* to *ff*.

75

Fl. *ff* *mp*

Vln. *ff* *p*

Vla. *ff* *p*

Vc. *ff* *p*

arco

Measures 75-77. Flute, Violin, and Viola parts feature triplets and accents. Violoncello part includes an arco section. Dynamics range from *ff* to *mp*. A tempo marking $\leftarrow \text{♩} = \text{♩} = 60 \rightarrow$ is present.

78

Fl. *mf* *p*

Vln. *mf* *p* *mf*

Vla. *mf* *p* *mp*

Vc. *mf* *p*

Measures 78-80. Flute, Violin, and Viola parts feature triplets and accents. Violoncello part includes a pizzicato section. Dynamics range from *mf* to *p*.

- Spell-

8

81

Fl. *p* *pp* *ppp*

Vln. *p* *pp* *ppp*

Vla. *p* *pp* *p espress.*

Vc. *p* *pp* *ppp*

85

Fl. *f* *f* *p* *mp*

Vln. *f* *pp* *f*

Vla. *f* *f* *f*

Vc. *f* *f* *f* *pp*

88

Fl. *mf* *pp* *mf* *pp* *mp*

Vln. *mf* *pp* *mf* *p dolce*

Vla. *f* *pp* *mf* *pp* *mf*

Vc. *mf* *f* *pp* *mp* *pp*

92

Fl. *mf* *pp*

Vln. *pp* *mf* *mp* *f*

Vla. *mp* *mf*

Vc. *mf* *pp* *mf*

Measures 92-93. Flute: *mf* (5), *pp* (3). Violin: *pp* (pizz.), *mf* (pizz.), *mp* (arco), *f* (pizz.). Viola: *mp* (arco), *mf* (arco, 5). Violoncello: *mf* (5), *pp* (arco, 5), *mf* (3).

94

Fl. *f* *mp* *mp*

Vln. *pp* *f*

Vla. *pp* *f*

Vc. *f* *f*

Measures 94-96. Flute: *f* (3), *mp* (6), *mp*. Violin: *pp* (arco), *f* (pizz.). Viola: *pp* (arco), *f* (pizz.). Violoncello: *f* (3), *f* (5), *f* (pizz.).

98

$\text{♩} = 116$

Fl. *f* *mp* *mf*

Vln. *f* *mp* *tr*

Vla. *f* *mp* *tr*

Vc. *ff* *mf*

Measures 98-100. Flute: *f*, *mp*, *mf*. Violin: *f* (arco), *mp* (3), *tr*. Viola: *f* (arco), *mp* (5), *tr*. Violoncello: *ff*, *mf* (arco).

- Spell-

10

102

ff

f

f

f

pizz.

106

mp

mp dolce

mp dolce

mp dolce

pizz.

110

f

mp

mp

mf

f

mp

f

p

mp

mf

f

p

pizz.

114

Fl. arco con sord. *mp*

Vln. *mp*

Vla. con sord. *mp*

Vc. pizz. *mf*

118

Fl. *p*

Vln. pizz. *p*

Vla. *espress.*

Vc. arco con sord. *mf*

123

Fl. *p*

Vln. arco *p* *mp*

Vla. *p*

Vc. *p* *mf*

12

127

Fl. *mf* *p* *mp*

Vln. *mf*

Vla. *p* *mp* *espress.*

Vc. *p* *mf* *p*

- Spell- *3*

3 *3* *3* *3* *3* *3* *3* *3*

130

Fl. *mf* *p* *f*

Vln. *p* *ff* *f*

Vla. *p* *f* *ff* *f*

Vc. *p* *ff* *f*

arco *pizz.* *arco*

5 *6* *3* *3* *3* *3* *3* *3*

134

Fl. *mp* *mf* *p* *p*

Vln. *mp* *mf* *mp*

Vla. *mp* *mf* *mp* *p*

Vc. *mp* *mf* *mf*

senza sord. *3*

3 *3* *3* *3* *3* *3* *3* *3*

- Spell-

14

150

Fl. *fp* *f*

Vln. *fp* *f* arco

Vla. *fp* *f* arco

Vc. *fp* *f* arco

154

Fl. *mf* *f* *ff*

Vln. *mf* *f* *ff*

Vla. *mf* *f* *ff*

Vc. *mf* *f* *ff* pizz.

157

Fl. *f*

Vln. *f*

Vla. *f*

Vc. *f* *ff*

159

Fl. *tr*

Vln. *mf* *ff*

Vla. *mf* *ff*

Vc. *arco* *mf* *ff*

161

Fl. *tr*

Vln. *tr*

Vla. *tr*

Vc. *tr*

$\text{♩} = 92$

164

Fl. *f* *ppp* *ff* *mf* *ppp* *f*

Vln. *pizz.* *arco* *ppp* *ff* *pp*

Vla. *pizz.* *arco* *ppp* *ff* *pp*

Vc. *pizz.* *ff*

- Spell-

16

168

Fl. *ppp* *f* *ppp* *f*

Vln. *f* *ppp*

Vla. *f* *ppp*

Vc. *f* *ppp*

171

Fl. *ppp* *f* *ppp* ♩ = 66

Vln. *p*

Vla. *p*

Vc. *f* *ppp*

175

Fl. *p*

Vln. *mf* *p*

Vla. *mf* *p*

Vc. *mf* *p*

- Spell-

183

Fl. *mf* *f* *mf*

Vln. *mf* *f* *mf* *mp*

Vla. *mf* *f* *mf* *mp*

Vc. *mf* *f* *mf* *mp*

Measures 183-187. Flute part features triplets and dynamic markings *mf*, *f*, and *mf*. Violin, Viola, and Violoncello parts feature triplets and dynamic markings *mf*, *f*, *mf*, and *mp*.

188

Fl. *f* *mp* *f* *p* *mp*

Vln. *mp* *pp* *mp* *mp*

Vla. *mf* *f* *pp* *mp* *mp*

Vc. *f* *mp* *mp*

Measures 188-194. Flute part includes dynamics *f*, *mp*, *f*, *p*, and *mp*. Violin and Viola parts include *mp*, *pp*, and *mp*. Violoncello part includes *f*, *mp*, and *mp*. Performance instructions include *pizz.* and *arco*.

195

Fl. *f* *fp* *accel.*

Vln. *f* *pp*

Vla. *f* *pp* *pp*

Vc. *f* *pp* *pp*

Measures 195-201. Flute part includes dynamics *f*, *fp*, and *accel.*. Violin and Viola parts include *f* and *pp*. Violoncello part includes *f* and *pp*. Performance instructions include *pizz.* and *arco*.

- Spell-

♩ = 82

18

200

Fl. *pp* *p* *mp* *mf*

Vln. *pp* *p* *mp* *mf*

Vla. *p* *mp* *mf*

Vc. *mf* *pp* *mf* *f*

Measures 200-205. Flute, Violin, Viola, and Violoncello parts. Includes dynamics *pp*, *p*, *mp*, *mf*, *f*, *pp*, *mf*, *f*. Includes articulation *arco*, *pizz.*. Includes fingerings 3, 5.

206

Fl. *fp* *p* *mp* *mp* *mf*

Vln. *fp* *mp* *mf* *f* *mp*

Vla. *p* *mf* *f*

Vc. *p* *mp* *mp*

Measures 206-210. Flute, Violin, Viola, and Violoncello parts. Includes dynamics *fp*, *p*, *mp*, *mf*, *f*, *mp*. Includes articulation *arco*, *pizz.*. Includes fingerings 3.

211

Fl. *mp* *fp* *mf* *f*

Vln. *f* *mp* *f* *mf*

Vla. *mp* *f* *mp* *f*

Vc. *f* *mp*

Measures 211-215. Flute, Violin, Viola, and Violoncello parts. Includes dynamics *mp*, *fp*, *mf*, *f*, *f*, *mp*, *f*, *mf*, *f*. Includes articulation *arco*, *pizz.*. Includes fingerings 3, 5, 6.

- Spell-

213

Fl. *f* *ff*

Vln. *f* *ff*

Vla. *mf* *ff*

Vc. *f* *mf* *f* *ff*

216

Fl. *ff*

Vln. *f* *mp*

Vla. *f* *p*

Vc. *f*

$\text{♩} = 144$

219

Vln. *f* *mp*

Vla. *mf* *f* *f*

Vc. *f*

222

Vln. *mp* *f* *mp*

Vla. *mp* *f* *mp*

Vc. *f* *mp*

- Spell-

20
225

Fl. *mp* *f* *sfz*

Vln. *f* *f*

Vla. *f* *f*

Vc. *f*

Detailed description: This system covers measures 225 to 227. The Flute part begins with a melodic line starting at measure 225, marked *mp*, which then crescendos to *f* and reaches a fortissimo (*sfz*) peak in measure 227. The Violin and Viola parts play a rhythmic accompaniment of eighth notes, marked *f*. The Violoncello part provides a bass line, also marked *f*.

228

Fl. *mp*

Vln. *f* pizz. arco

Vla. *f* *fp* *f* *mp*

Vc. *f* *mp* *f* *mp*

Detailed description: This system covers measures 228 to 230. The Flute part has a melodic line starting at measure 228, marked *mp*. The Violin part starts with a pizzicato (*pizz.*) *f* dynamic in measure 228, then switches to arco in measure 229. The Viola part starts with a pizzicato (*pizz.*) *f* dynamic in measure 228, then switches to arco in measure 229, with dynamics *fp*, *f*, and *mp*. The Violoncello part starts with an arco *f* dynamic in measure 228, then switches to *mp* in measure 229, and back to *f* in measure 230.

231

Fl. *f* *mp* *f* *sfz* *sfz*

Vln. *f* *mp* *f* *mp*

Vla. *f* *mp*

Vc. *f* *mp*

Detailed description: This system covers measures 231 to 233. The Flute part features a melodic line with a sextuplet (*6*) in measure 231, marked *f*, followed by a triplet (*3*) in measure 232 marked *mp*, and another triplet (*3*) in measure 233 marked *f*. The piece concludes in measure 233 with a fortissimo (*sfz*) dynamic. The Violin part plays a rhythmic accompaniment, marked *f* in measure 231 and *mp* in measure 232. The Viola part also plays a rhythmic accompaniment, marked *f* in measure 231 and *mp* in measure 232. The Violoncello part provides a bass line, marked *f* in measure 231 and *mp* in measure 232.

234

Fl. *f* *mp* *f* (warm)

Vln. *f* *mp* *f* (warm)

Vla. pizz. *f* arco *f* (warm)

Vc. *f* *mp* *f* (warm)

Measures 234-237. Flute has a triplet. Violins and Violas play a rhythmic pattern of eighth notes. Violoncello has a triplet. Dynamics range from *f* to *mp*. A *f* (warm) dynamic is indicated for the second half of the system.

238

Fl. *ff*

Vln. n.v. *p* C.V. n.v. *f* C.V. *f* *mf*

Vla. n.v. *p* C.V. n.v. *f* C.V. *f* *mf*

Vc. n.v. *p* C.V. n.v. *f* C.V. *f* *mf*

Measures 238-241. Flute has a triplet and a 5-measure rest. Violins and Violas have *n.v.* (no vibrato) and *C.V.* (con vibrato) markings. Dynamics range from *p* to *ff*. A 6-measure rest is present in the final measure.

242

Fl. *f* *mp* *f* *mp* *ff* *fp* pizz.

Vln. *f* *f* *f* *f* pizz.

Vla. *f* *f* *f* pizz.

Vc. *f* *f* *f* *mp*

Measures 242-245. Flute has a triplet and six sixteenth-note runs. Dynamics range from *f* to *fp*. Violins and Violas have sixteenth-note runs. Violoncello has a triplet. A *pizz.* (pizzicato) marking is present for the final measure.

- Spell -

22

245

Fl. *mf* *f* *mp*

Vln. arco *mp* *mf* *f*

Vla. arco *mp* *f* *mp* *p*

Vc. *f* *mp*

249

Fl. *ff* *ff* *ff*

Vln. pizz. *f* arco *f*

Vla. pizz. *f* arco *f*

Vc. *f*

252

Vln. *p*

Vla. *p*

Vc. *mp*

256

Fl. *mp*

Vln.

Vla.

Vc.

260

Fl. *f mp f⁶*

Vln. *mf fp fp fp*

Vla. *mf fp fp fp mp*

Vc. *f pizz. arco ff mp*

264

Fl. *f*

Vln. *f fp*

Vla. *f pizz. ff*

Vc. *f pizz. ff*

- Spell-

24 268

Fl. *f* > *f* < *ff* 6 6 6 6

Vln. *fp* *fp* *f* pizz.

Vla. arco *mf* *f*

Vc. arco *mf* *f*

271

Fl. 3 *mf* 6 *f* 5

Vln. arco *f* *f*

Vla. *f* *f* > *f* *ff* (thrown bow) *f*

Vc. *f* *f* > *f* *ff* *f*

275

Fl. 5 6 6

Vln. *f* *f* > *f*

Vla. *f* *f* *f*

Vc. pizz. arco

278

Fl. *ff* *mf*

Vln. *mp* *mp* *mf* *mf*

Vla. *mp* *mp* *mf* *mf*

Vc. *mp* *mf* *mf* *f*

281

Fl. *f* *ff* *3*

Vln. *f* *ff* pizz. arco *3*

Vla. *f* *ff* pizz. arco *3*

Vc. *ff* pizz. arco *3*

284

Fl. *mp* *ff* *fff*

Vln. *mp* *ff* *3*

Vla. *mp* *ff* *3*

Vc. *mp* *ff* *3*

- Spell-
Molto rit.

288

G.P.

Fl. *mf*

Vln. *fff* *mf*

Vla. *fff* *mf*

Vc. *fff* *mf*

fz

♩ = 60

296

Fl. *p* *p espress.*

Vln. *p* *p espress.* *pp dolce*

Vla. *p* *pp dolce* *p espress.*

Vc. *p* *p espress.* *pp dolce*

302

Fl. *p (quazi pizz.)* *mp*

Vln. *mp espress.* *pp dolce*

Vla. *pp dolce* *mp espress.* *pp dolce*

Vc. *mf* *pp* *mf*

306

Fl. *fp*

Vln. *p*

Vla. *mp* *pizz.* *arco* *ff*

Vc. *arco* *mp* *pizz.* *pp* *arco* *p* *3*

310 (more breathy and less pitched) (mostly breath, almost no pitch)

Fl. *pp* *ff* *pp* *ff*

Vln. *pp* *ff* *pp* *ff*

Vla. *pp* *ff* *pp* *ff*

Vc. *pizz.* *pp* *pp* *ff*

314 (key clicks) (breath only - non pitched)

Fl. *mf* *pp < ff* *ppp* *mf* *pp* *< ff*

Vln. *f* *ppp* *mf* *pp* *f*

Vla. *f* *ppp* *mf* *pp* *f*

Vc. *f* *ppp* *mf* *pp* *f*

*Snap pizz. on lowest string while the left hand dampens the string to produce a non-pitched, percussive thump.

- Spell-

28

318

(semi-pitched) (non-pitched)

Fl. *fp* *p* *fp* *fp*

Vln. *ff* *ppp* *f*

Vla. *ff* *ppp* *f*

Vc. *ff* *ppp* *f*

- Spell-

Notes:



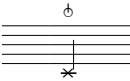
Flute: Key clicks. May also be performed as lip pizz for improved balance.



Flute: Completely cover embouchure hole and slowly blow air to produce a breathy, unpitched sound.



Strings: Thrown bow. Indeterminate number of bounces lasting the duration of the written note.



Strings: Snap pizz while lightly dampening the lowest string with all 4 fingers of the left hand to produce a percussive thump.

C.V. = with vibrato

N.V. = non vibrato